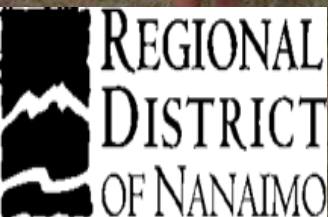




Why Buildings Matter (a lot)



Sharon Horsburgh, M.A. MCIP RPP
Regional District of Nanaimo
April 25, 2017



PLANNERS SURVEY QUESTIONS

Do you live in a place that...

- **makes you happy?**
- **in the neighborhood you like?**
- **contributes to your health?**
- **affordable?**
- **connects you with your surrounding community?**
- **uses very little energy and water to make you feel comfortable?**
- **is easy and inexpensive to run?**

**As Canadians, we
spend close to
90% of our time
inside.**



HOUSEHOLD EMISSIONS :

5.2-6.0 t CO₂e

FROM ENERGY USE:

Electricity

Natural Gas

Heating Oil

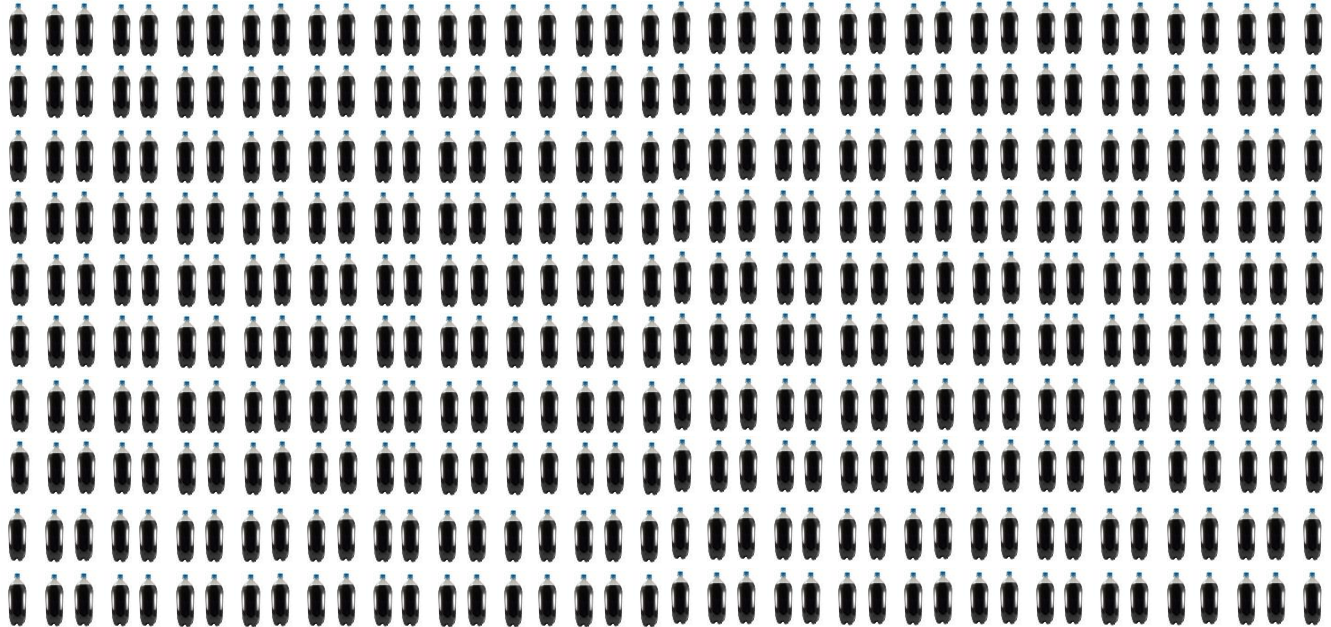
Gasoline



IMPACT

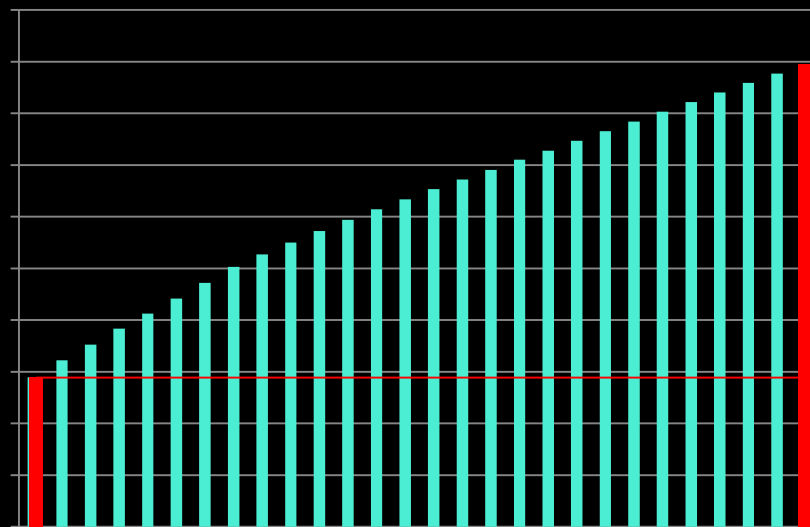
WATER USE PER HOUSEHOLD:

800 litres/ day





GROWTH IN THE REGION 2009-2036: 90,000 homes Region-wide



**Increases in GHG
emissions**

2009

2036



GOAL

EMISSIONS REDUCTIONS:

**80% BELOW 2007
BY 2050.**



WHAT DO WE DO?



**RENOVATE ALL
EXISTING
HOMES.**



WHAT DO WE DO?



**MAKE ALL NEW
HOMES NET**

ZERO. *(Provincial Climate*

Action Plan 2032)



HOW?

Challenge – Limited resource



Observation – Barriers are not necessarily financial



Strategy – Build social capital

Green Building Series



2010

RDN GREEN BUILDING
SEMINARS & GREEN
SKYLINE TOUR



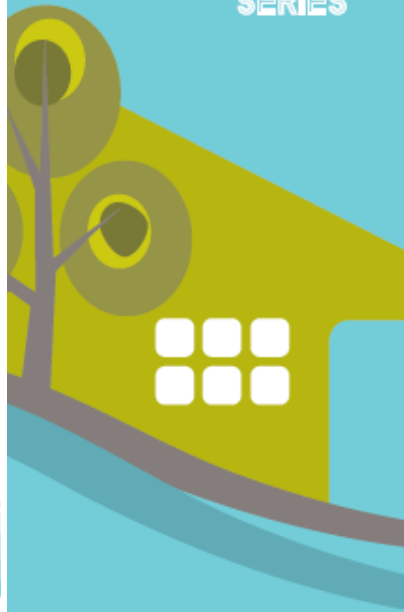
Photo courtesy of David...



BUILDING LOCAL
Resilience
PRESENTATIONS & TOURS



2015 **GREEN
BUILDING
SERIES**





Green Building Rebates

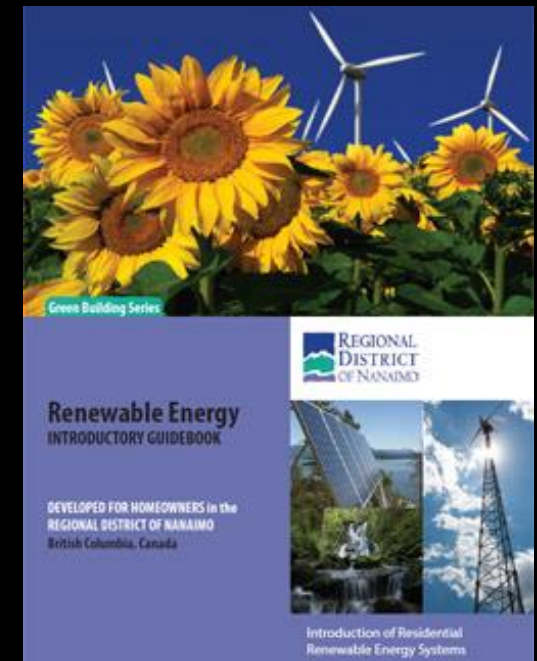


www.RDNrebates.ca

- **Up to \$1,000 -Sustainable Development Checklist**
- **\$150 to \$200 – Home Energy Assessment**
- **\$250 – Renewable Energy System**
- **\$250 – Woodstove Exchange**
- **\$250 – Oil to Heat Pump**
- **Up to \$750 – Rainwater Harvesting**
- **\$250 – Residential EV Charging Station**
- **Up to \$250 – Graded Site-Cut Timber**

Green Building Information

- **Guidebooks**
- **Videos**
- **Studies and reports**
- **Exemplary projects**



Contact: sustainability@rdn.bc.ca